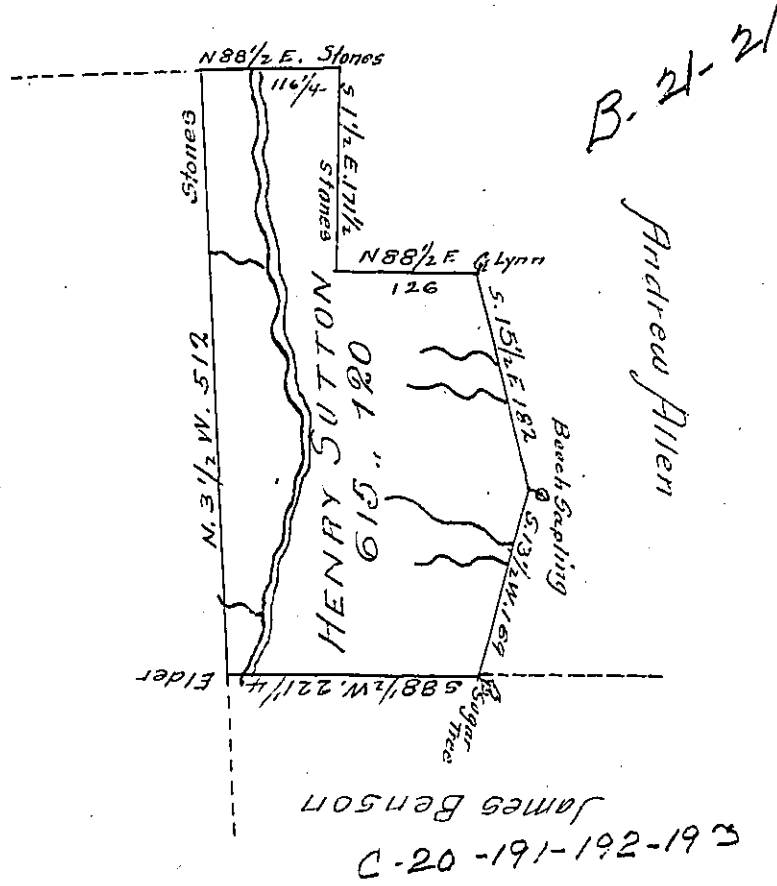


c-21 - 285'



In pursuance of an order dated July 29th 1803. Resurveyed
 May 1st 1806 from an original survey to Henry Sutton on
 Warrant of May 6th 1788 the above described Tract of Land
 situate on the waters of Martin Creek in Luzerne County
 Containing Six hundred and fifteen acres One hundred
 and twenty perches and allowance of Six p Cent

Geo. Haines D.S.

Samuel Cochran Esq.
 Surveyor Gen^l

IN TESTIMONY that the above is a copy of the original remaining on file in
 the Department of Internal Affairs of Pennsylvania, made
 conformably to an Act of Assembly approved the 16th day of
 February 1833, I have hereunto set my hand and caused
 the Seal of said Department to be affixed at Harrisburg,
 this twenty-fourth day of January 1907

Loac R Brown
 Secretary of Internal Affairs.